

OM

OMEGA MAS



About Us

PT. Omega Mas was founded in 1994 by Dietmar Dutilleux and offers personalized design, prototyping and production services. We specialise in catering to the exacting standards and high expectations of our partners.

Our team has completed projects and exported to the USA, Australia, New Zealand, Italy, Belgium, Spain, Taiwan, Germany, Denmark and several other countries. We have also had the privilege in building up long term relationships with several key customers and at the same time also handling short term, one-off projects.

We take pride in our ability to service both local and international clients with the highest standards of reliability and professionalism. We deliver incredible service, on-time with outstanding quality, integrity and passion. So that you can realise your vision, meet your deadlines and achieve your goals.

PT Omega Mas main production facility is located in Pasuruan, Indonesia. With a secondary office in Surabaya. Our factory spaces currently span over 12.000 m2. And our production team consists of a group of highly skilled craftsmen able to translate your vision into viable prototypes that are ready for production.

We understand that prototypes or a piece of furniture doesn't always turn out the way it looks in your head, so we offer a cost-effective prototyping and sample making service to assist you to realise your true vision. Reporting each step of the production process and working closely with your team step by step. Our skilled workforce are capable of exceptional craftsmanship and a fast turnaround time.

We are a production company, based on solid world class team-work. Able to be a valuable partner for our customers in an environment where people can thrive.

Dietmar Dutilleux
Director

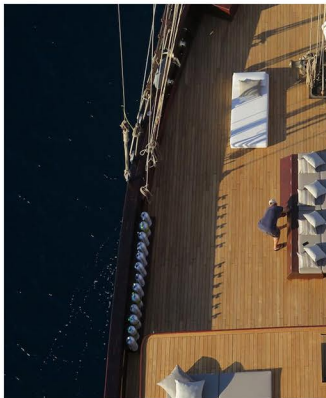


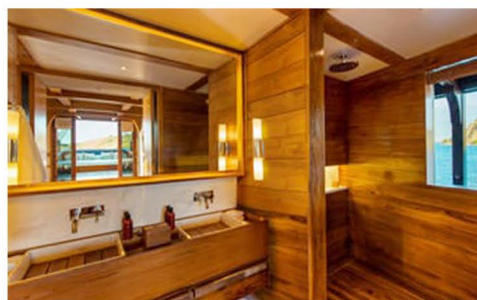
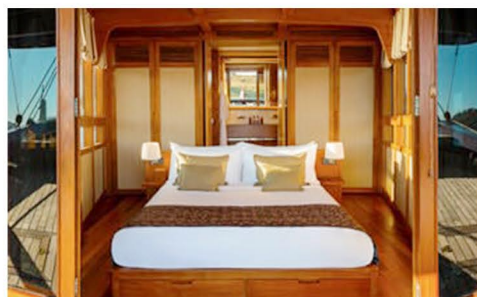


Amandira Luxury Yacht
Aman Hotel Group

Featured in :
The Robb report
The Telegraph UK
Architectural Digest
Financial Times

Please visit the Amandira Boat
Website for more information.



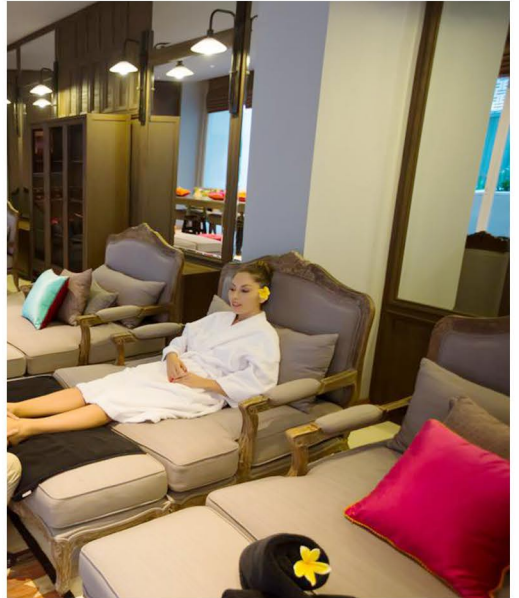
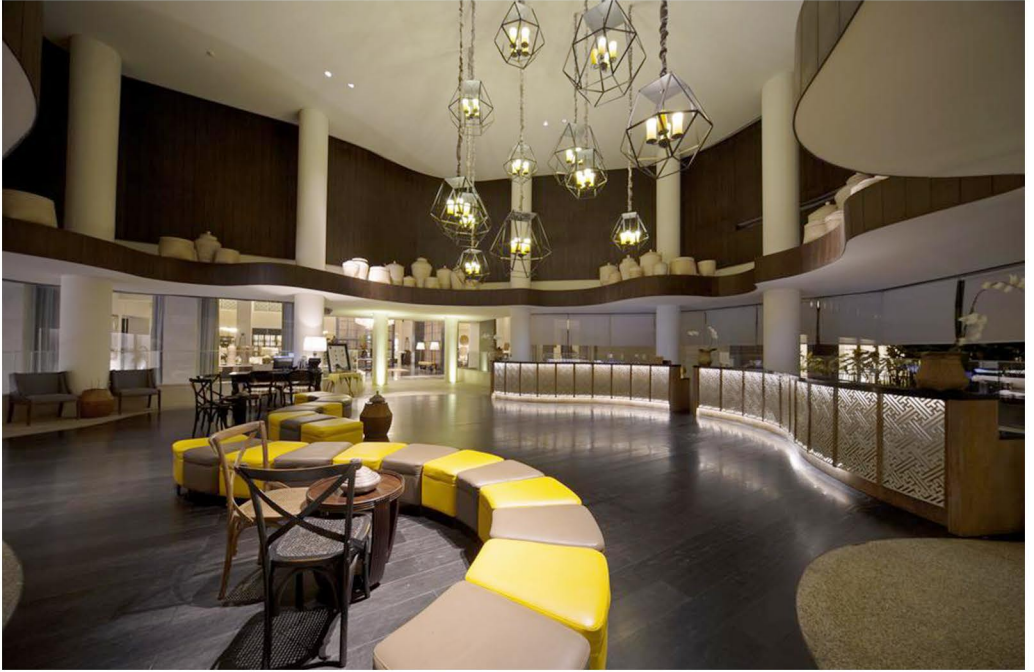


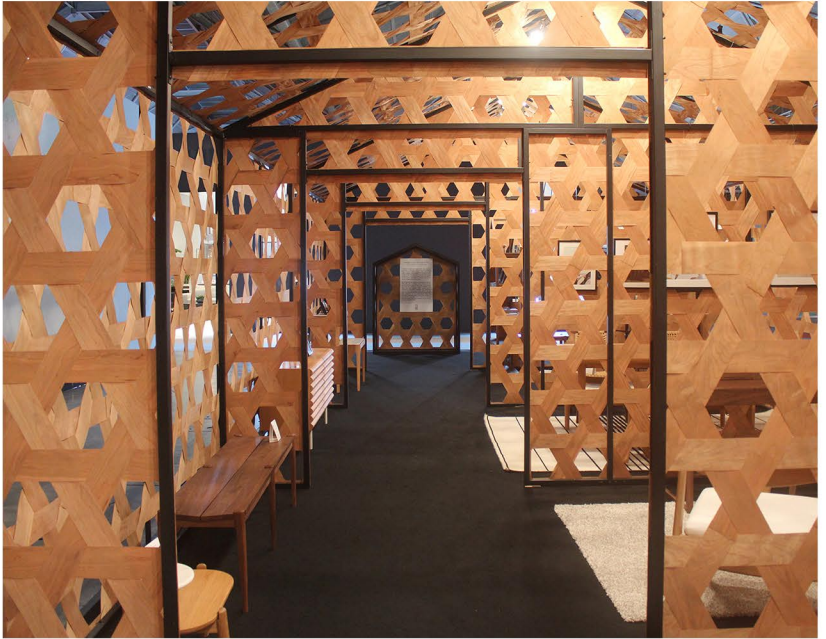


Bali Paragon Resort Hotel

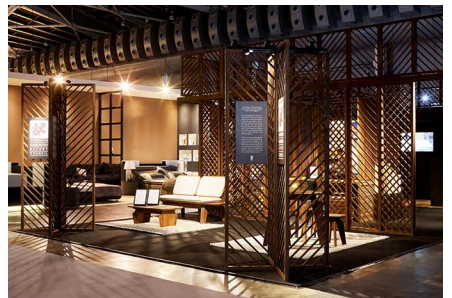
Fitted and Loose furniture
Wall panels, lighting







AHEC Exhibition
Jakarta, Indonesia



HINIKA furniture brand

Hinika is a brand of beautifully designed furniture and accessories developed by Jarrod Lim. These superbly crafted pieces have been specified in several hotel and residential projects worldwide and been featured in numerous international magazines including Wallpaper, Monocle, Elle Decor and Indesign.

For more info please visit hinika website: hinika.com







Houstonian Hotel, Club & Spa

Houston, US

Guestroom





Casa D'Amore
Luxury Aged Care Family
Queensland
Australia



Easy Collection
Taiwan, China



19033
Villa Showhome Kitchen

Gourmet Kitchen Company
New Zealand





18102
Papamoa beach Road Kitchen Bar
Gourmet Kitchen Company
New Zealand





Astelia Lot 110
Project

Gourmet Kitchen Company
New Zealand





Wanaka Project

Australia
Apartments



18543-B Calavaras Laminated Teak Headboard
H: 1680mm W: 2100mm D: 127mm



22162 B7023 Frame Suar Chair
H:711mm W:699mm D:755mm

22059B Suar Block Coffee Table
H:381mm W:1090mm D:724mm

22235 N8423 Leaf Lounge Chair
H:803mm W:831mm D:758mm



21283B Arch Suar Coffee Table
H:310mm W:1100mm D:1100mm



22269 Teak Slice Coffee Table, SS leg
H:457mm W:1194mm D:787mm

20518(K1) B2503 Suar Chair Frame, Round
H:693mm W:774mm D:654mm



22099 487-012 Accent Table
H:420mm W:533mm D:533mm



19571 Accent Chair
H:760mm W:800mm D:750mm



19002 Black Petrified Dining Table
H:762mm W:2235mm D:1117mm



19302-19303 Cahill Dining Table
H:762mm W:1370mm D:1370mm



20214 Side Table 20215 Cocktail Table 20216 Side Table



16020 Suar 34 Coffee Table
H:330mm W:863mm D:863mm



19485-19486 Calavaras Round Dining Table
H:762mm W:1524mm D:1524mm



ID94282 Petrified Wood Table
H:510mm W:460mm D:460mm



ID93227 Petrified Wood Stool Square
H:457mm W:324mm D:324mm



ID104175 Bleached Teak Console
H:787mm W:1830mm D:457mm



ID92295 Women Sculpture Stone
H:2500mm W:430mm D:400mm



ID107313-ID107317 Revolving Diamond Teak Wood Sculpture
H:2570mm W:2250mm D:2250mm



ID108819-ID108824 Teak Wood Sculpture on Stand
H:2159mm W:1067mm D:610mm



ID92295 Women Sculpture Stone
H:2500mm W:430mm D:400mm



ID107313-ID107317 Revolving Diamond Teak Wood Sculpture
H:2570mm W:2250mm D:2250mm



ID107303-ID107307 Revolving Circle Teak Wood Sculpture
H:1970mm W:1650mm D:1650mm



21283 Arch Coffee Table Square, Metal Legs
H:310mm W:1100mm D:1100mm



21285 Arch Side Table Square, Metal Legs
H:610mm W:610mm D:610mm



19571 Accent Chair
H:760mm W:800mm D:750mm



19571 Accent Chair
H:760mm W:800mm D:750mm



21285 Arch Side Table Square, Metal legs
H:610mm W:610mm D:610mm

Koi Accent Chair
H:760mm W:800mm D:750mm

21230 Twist Table
H:560mm W:430mm D:430mm

21013 Carbonized Suar Wood Chair
H:762mm W:670mm D:670mm





11119-MF Dresser Bottom
H:900mm W:2000mm D:450mm



11122-MF Bar Cabinet
H:1500mm W:1100mm D:450mm



11120-MF High Dresser
H:1000mm W:1500mm D:450mm



11118-MF Dresser Top
H:1100mm W:2000mm D:450mm



OB144 Obama 160cm Low TV
H:470mm W:1600mm D:500mm



OB180 Obama Rect Table 180cm
H:770mm W:2300mm D:900mm



12065 Student Housing Bench
H:460mm W:1260mm D:400mm



12069 Student Housing End Table 24
H:590mm W:535mm D:535mm



12070 Student Housing Bistro Table
H:1065mm W:915mm D:915mm



12062 Student Housing Console Table
H:760mm W:1370mm D:510mm



12063 Student Housing Table 36"
H:785mm W:915mm D:915mm



12186 Old Teak Hall Kommode
H:1650mm W:700mm D:400mm



12185 old Teak TV Low
H:530mm W:1500mm D:420mm



12188 Old Teak Lamp Table
H:480mm W:600mm D:600mm



12180B Old Teak Library Rack - Bottom
H:800mm W:2000mm D:510mm



People-Planet and Profit with Principle

How an Indonesian furniture manufacturer has been ahead of the environmental curve for nearly 3 decades

Indonesia ranks as the 14th most vulnerable country in the world in the Climate Risk Index and its capital is the most environmentally vulnerable city in the world, Jakarta. However, it's also home to some extraordinary businesses who are setting the example for the rest of the country in their commitment to sustainable practices. Omega Mas, a furniture manufacturer and exporter in East Java, has had environmental responsibility at its heart for almost 30 years.

Its mantra is People-Planet-Profit with Principle and Director, Dietmar Dutilleux says sustainability is one of the basic pillars of each decision the company takes.

Founded in 1994, the company began producing handmade wooden furniture for global export. For the first two years, the company was small with only 15 full time staff. As their reputation established the company moved to a custom-built facility and grew into one of the most highly regarded manufacturers of fine timber furniture in the APAC region.

The approach has been one of team commitment. Despite few incentives to adopt responsible processes at first, the business invested in more efficient machinery and implemented a bottom-up approach to management. "We have asked everyone at every level to act as a stakeholder. By starting from the ground up we have made implementation of sustainable practices easier and more natural" says Dietmar. "Overall we asked everyone to take a little bit more care. We have the whole team participate and give feedback regularly so that we can all have a stake in this process". Dietmar goes on to add that this team approach to learning how to be more environmentally responsible has meant a constant evolution in approach and the incorporation of more sustainable practices and procedures. So much so that he says they "often take us by surprise and show us more efficient processes and associated savings were just around the corner".

Producing for some of the region's top designers and retailers, and regularly exporting to overseas markets, Dietmar explains that just as the management style is bottom up, with designers they often adopt a 'work backwards' approach. "We start with the end result they want to achieve and give sustainable options that fit those criteria...we've never had an issue with this as designers, like us, see sustainability as a key issue woven both into the design and the production process".

Omega Mas, unsurprisingly, uses a range of timber species in their work and notably American hardwoods given their superior environmental profile. A view of their work shows American oak and walnut in abundance. The former is one of the most popular species in export markets around the globe. Growing stock in the US forest is increasing by 10million m3 each year with growth exceeding harvest in all states producing white oak. It's popular for furniture and flooring given its strength which is superior to European oak. Its distinctive grain and colour also makes it a favourite amongst designers. Walnut has always been associated with fine furniture and luxury interiors. Whilst not as prolific as white oak, growth still exceeds harvest each year making it a sustainable choice for specifiers.

Omega Mas' commitment to sustainability is no more evident in its involvement with Varuna, the most environmentally friendly surfboard in the world. The company formed part of the core development team, growing and processing the balsa wood from which the surfboards are made, hence the slogan "From Seed to Surfboard". "We started with an environmental target" says Dietmar "and designed a world class product around it".

When environmental responsibility is a foundation on which a business is built it appears that success follows. Not just in terms of a business being perfectly positioned to meet the needs of an increasingly aware consumer but in a sense of contentment that the choices you have made contribute to a healthier planet.

American Hardwood Export Council (AHEC)

AHEC is the leading international trade association for the U.S. hardwood industry, representing the committed exporters among American hardwood companies and all the major U.S. hardwood product trade associations. For over 25 years, AHEC has been at the forefront of international wood promotion, successfully building a distinctive and creative brand for American hardwoods and providing technical advice for manufacturers, specifiers and designers around the world.

OM

OMEGA MAS

QUALITY LIFESTYLE DESIGN



Dietmar Dutilleux



Yuliette Christoffel H.

Dusun Winong Timur RT 11/RW 06
Desa Pohgading, Kecamatan Pasrepan
Kabupaten Pasuruan 67175
Indonesia

+62-343-8440337

www.omegamas.com